

# Option-Vacuum Pump

## Low noise, high efficiency

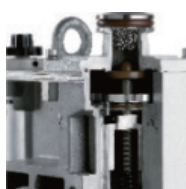
- Two-stage vacuum pump control technology with lower noise, higher vacuum, higher pumping efficiency, for BV series , The vacuum drying time is around 2-4 mins.

## Clean and reliable

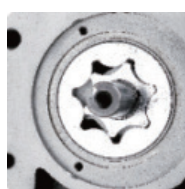
- Double anti-return oil structure to more reliably protect the vacuum system from oil pollution after shutdown.
- It adopts imported German oil seal and seals with fluororubber material to improve corrosion resistance and prevent oil leakage.
- Adopting the aviation technology bushing treatment process, the life of the exhaust valve piece reaches 10 billion times.
- It adopts high-quality materials such as vacuum pump oil imported from Japan, which makes the operation more reliable and has a longer service life.



Gas ballast



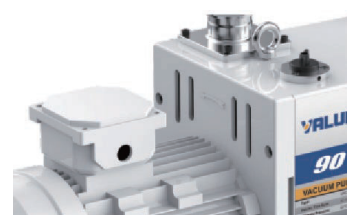
Auto antisuck back valve



Gear pump



Integrated pump body structure



## Technical parameters

Vacuum oven model	Capacity(L)	Degree of vacuum	Vacuum pump model	Type	Flow of Vacuum pump	Time
BV-20	24	133Pa	VRD-8	two-stage pump	2L/S	1min
BV-50	51	133Pa	VRD-8		2L/S	1min
BV-90	91	133Pa	VRD-16		4L/S	2min
BV-120	125	133Pa	VRD-16		4L/S	3min
BV-210	216	133Pa	VRD-24		6L/S	4min

## Technical parameters

Model		VRD-4	VRD-8	VRD-16	VRD-24
Displacement speed	50Hz m3/h(L/s)	4(1.1)	8(2.2)	16(4.4)	24(6.6)
	60Hz m3/h(L/s)	4.8(1.3)	9.6(2.6)	19.2(5.2)	28.8(7.9)
Ultimate partial pressure gas ballast close		5x10 - 2Pa	5x10 - 2Pa	4x10 - 2Pa	4x10 - 2Pa
Ultimate total pressure gas ballast close		5x10 - 1Pa	5x10 - 1Pa	4x10 - 1Pa	4x10 - 1Pa
Ultimate total pressure gas ballast open		10 Pa	10 Pa	8x10 - 1Pa	8x10 - 1Pa
Power supply		Single/Three-Ph			
Power rating		0.4/0.37kW	0.4/0.37kW	0.55kW	0.75 kW
Level of protection		IP44			
Intake and exhaust		KF16/25	KF16/25	KF25	KF25/40
Oil capacity		0.6 - 1.0 L	0.6 - 1.0L	0.9 - 1.5L	1.3 - 2.0 L
Motor speed(50/60Hz)		1440 /1720 rpm			
Ambient temperature		10 - 40°C			
Noise level(50Hz)		≤ 52dB	≤ 52dB	≤ 58dB	≤ 58dB
Weight		19 kg	21 kg	30 kg	35 kg
Dimension(LxWxH)mm		440x144x217	440x144x217	530x188x272	567x188x272